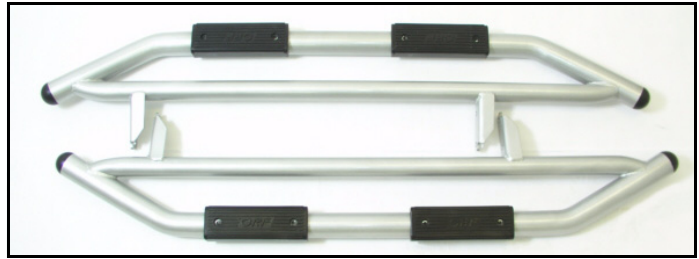




3651 N Highway 89 • Chino Valley, AZ 86323  
(928) 636-7080 • www.orfab.com

# TOYOTA FJ CRUISER PRO STEP INSTALLATION INSTRUCTIONS 2006 - 2008                      KIT# 84802



**⚠ WARNING**  
Many states and municipalities have laws restricting bumper heights and vehicle lifts. Consult state and local laws to determine if the changes you intend to make to the vehicle comply with the law.

**⚠ WARNING**  
Always wear eye protection when operating power tools.

**⚠ WARNING**  
Before you install this kit, block the vehicle tires to prevent the vehicle from rolling.

**NOTE**  
Performance Automotive Group recommends using the Loctite® supplied in the kit on the threads of all kit nuts and bolts unless specified otherwise in these instructions.

**⚠ WARNING**  
Before you install this kit, read and understand all instructions, warnings, cautions, and notes in this instruction sheet and in the vehicle owner's manual.

**⚠ CAUTION**  
Proper installation of this kit requires knowledge of the factory recommended procedures for removal and installation of original equipment components. We recommend that the factory shop manual and any special tools needed to service your vehicle be on hand during the installation. Installation of this kit without proper knowledge of the factory recommended procedures may affect the performance of these components and the safety of the vehicle. We strongly recommend that a certified mechanic familiar with the installation of similar components install this kit.

# Before Starting Installation

**NOTE**  
Kit parts are prefaced by the word **kit** and appear in **bold print**.

1. Carefully read all warnings and instructions completely before beginning.
2. Verify all parts have been received in this kit by checking the parts list at the end of this document.

**NOTE**  
If parts are missing from kit, please be prepared to provide the following information:  
1. **Name** of purchase location  
2. **Bar Code** on side of box  
3. **Date** above bar code  
4. **Date** inside box cover  
5. **Inspector #** from inside box cover

3. **Only install this kit on the vehicle for which it is specified.** If anytime during the installation you encounter something different from what is outlined in the instructions, call technical support at (928) 636-3176.

### Special tools needed:

4. Park vehicle on a clean, dry, flat, level surface and block tires so vehicle cannot roll in either direction.

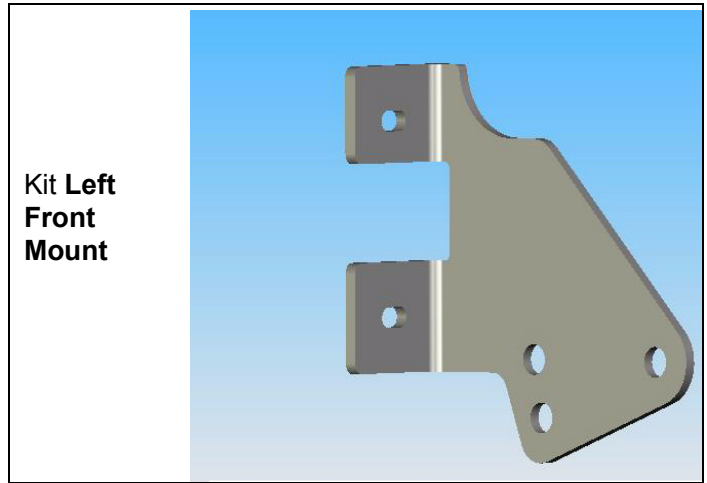
**Remove factory side bars if present.**

## Prepare to Install Kit

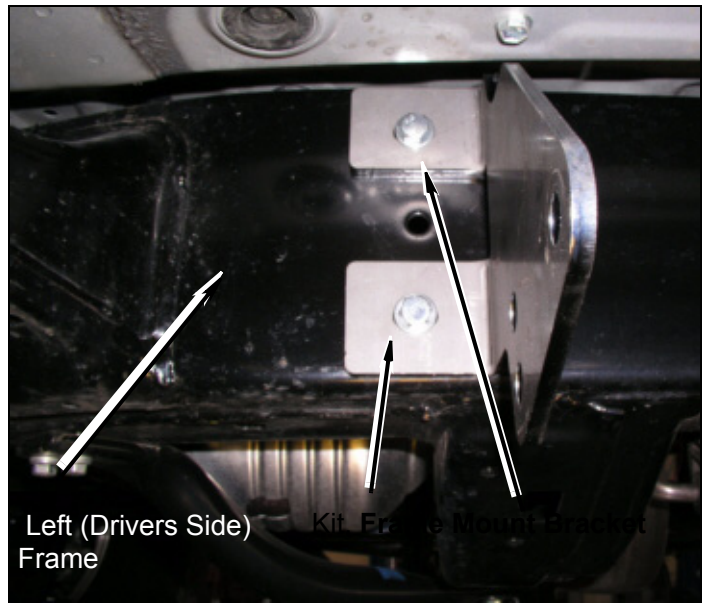
### Drivers Side of Vehicle

1. Install **kit driver side front bracket** (Frame mounted).

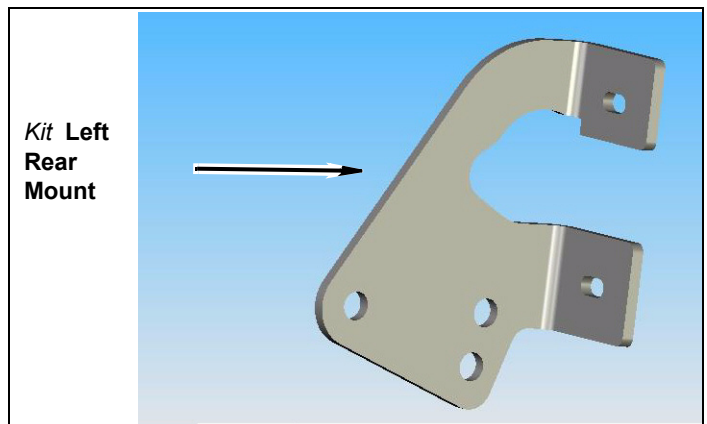
- a. Locate Factory Side bar mounting Holes on Frame below driver's door.



- b. Install one **kit Front Mount Bracket** and (8mm x 30) **bolts & washers**.

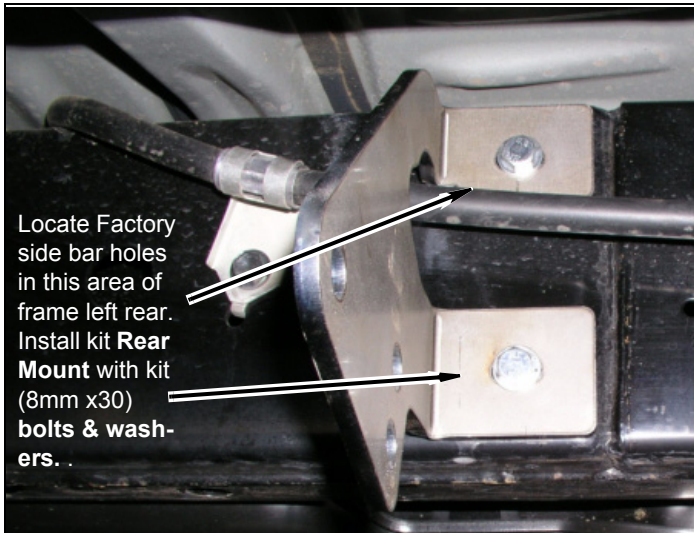


2. Locate Factory Side bar mounting Holes on Frame below driver's rear door.



- a. Install Kit **Rear Mount bracket** Left (drivers side)..

four kit **washers** (1/2" flat), and four kit **nuts** (flange).



- 3. Repeat Step 1 and 2 for Passenger side of Vehicle (Right).

**Pro Step Assembly.**

**Install Side Bars on Vehicle**

**△ NOTE**  
The side bar can be installed in two positions. It can be installed so that the steps are flat or it can be installed with the steps slightly angled downward.

- 1. Install the kit **Pro Step assembly** (driver) onto kit **body brackets** using four kit **bolts** (1/2"x 1-1/4")

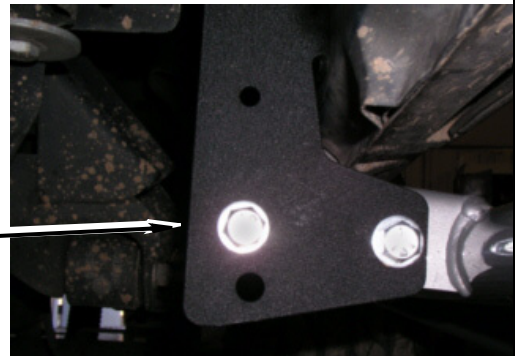
**PRO STEP FLAT (Running Board) Position**

Kit **Bolt** (1/2" x 1.1/4"), Kit **Washer** (7/16 USS"), and Kit **Nut** (flange) in Lower Hole



**PRO STEP ANGLED Down (Stirrup) Position**

Kit **Bolt** (1/2" x 1-1/4"), Kit **Washer** 1/2"), and Kit **Nut** (flange) in Upper Holes



- a. Tighten all mounting bolts on driver side of vehicle.

- 2. Repeat for passenger side of vehicle.

**Install Step Pads on Side Bar**

- 1. Step Pads
- 2. Position kit **step pads** on kit **side bar hoop** in desired location. Ensure the kit **step pad** is level and mark two locations on each pad to drill.



- a. Drill two 17/64" holes for each kit **step pad**  
Install two kit **bolts** (5/16" x 3/4") self tapping in each kit **step pad**.
- b. Repeat for passenger side. (right)

## Kit Parts List

### Qty. Description

#### KIT # 84802

- 1) **Bar, Side- Driver (2.5"OD)**
- 1 **Bar, Side - Passenger (2.5" OD)**
- 1 **Driver side front mount bracket**
- 1 **Driver side rear mount bracket**
- 1 **Passenger side front mount bracket**
- 1 **Passenger side rear mount bracket**
- 4 **Step, Urethane**
- 4 **Plug, Urethane**
  
- 1** **84802 (Hardware bag kit)**
- 8) **Bolt 8mm X 30mm**
- 8) **Bolt 1/2" X 1 1/4"**
- 10) **Bolt 5/16" X 3/4", self tapping**
- 8) **Nut 1/2" flange**
- 8) **Washer 7/16" USS flat**
- 8) **Washer 8mm**

